

# CNC DB25 Breakout Board adapter stepper motor driver

## Description:

Built in DB25 male connector.

DB25 Output Pin: P1,P2,P3,P4,P5,P6,P7,P8,P9,P14,P16,P17.

DB25 Input Pin: P10,P11,P12,P13,P15.

DB25 GND Pin: P18-P25.

Power supply: +5V DC.

Built in C-class Optical-coupler.

High quality with Surface-mount Tech.

Insulate power supply select:  
if JN1&JN2 connected, is the case of the single  
power, IF JN1&JN2 Removed need use two power.

DB25 POWER Board POWER 5V  
VCC VSS GND VDD

Output Pin

DB25 CONNECTOR

Normal DB25 and  
output is high Level,  
low Level enable.

the contact pin  
same as the  
terminal P10-P15

P13 P12 P11 P10 P15 GND

Input Pin  
can connect switch etc.

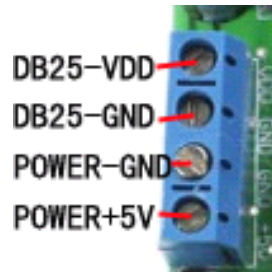
P2  
P3  
P4  
P5  
P6  
P7  
P8  
P9  
P14  
P1  
P16  
P17  
GND

## About how to use:

1、 To connect the PC parallel port by the parallel cable of the printer,



2、 The power supply input port, can set up the single or double power supply by JN1 an JN2.

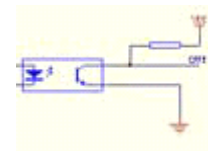
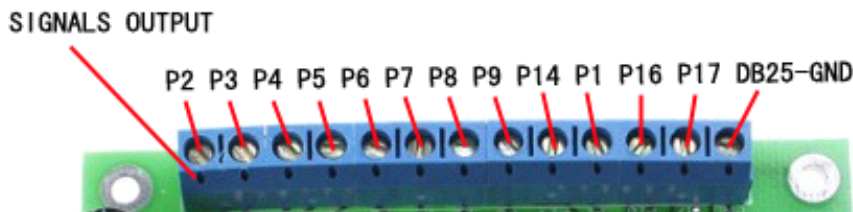


JN1&JN2 connected , is the case of the single power , the POWER + and the isolating source will be connected, the GND and the isolating source GND will be connected: if the JN1&JN2 is open circuit , the POWER + and the isolating source will be cut off, the GND and the isolating source

GND will be cut off. J4 is the GND and the POWER + of the isolating source:

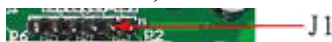


3、 Output connector, 12 wires OC( screw terminal output:

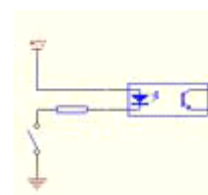
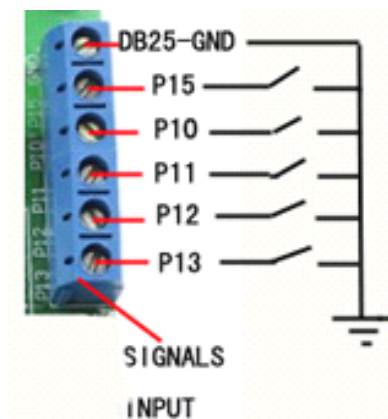
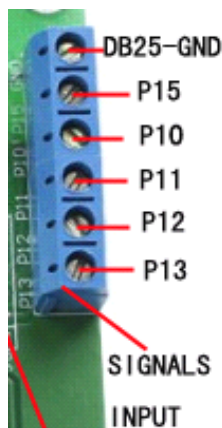


The internal circuit

J1 is the contact pin output, as the same as the terminal P2-P7, used to connect the small driver.



4、 The 5 channel input signal port can be connected to the external mechanical switch, the proximity switch etc.



Internal circuit

Through the P10-P15 , it can connect to the sensor and switch, and it can realised the function by setting up the software.  
The connection of the mechanical switch

